

[Download PDF File](#) **Current Price List****Products for ELECTROACTIVE POLYMER SENSOR TECHNOLOGY**

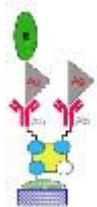
[Bioanalytical Biosensors](#) || [Electroactive Polymer Sensor Interrogation System \(EPSIS\)](#) || [Electroactive Polymer Microsensor Electrodes \(EPMEs\)](#) || [Interdigitated Microsensor Electrodes \(IMEs\)](#) || [IME Accessories](#) || [Independently Addressable Microband Electrodes \(IAMEs\)](#) || [IAME Accessories](#) || [Electrochemical Cell-on-a-Chip \(ECC\)](#) || [Microdisc Electrode Arrays \(MDEAs\)](#) || [ECC and MDEA Accessories](#) || [Microarray BioChip Substrates](#) || [Planar Metal Electrodes \(PMEs\)](#) || [Planar ITO Electrodes \(PITOE\)](#) || [Mini-electrodes](#) || [Gas/Vapor Sensors](#) || [Liquid \(FIA\) Sensor/Detector](#)

**CHEMICAL AND BIOSENSOR INSTRUMENTATION**

MODEL/PART NO.	DESCRIPTION	UNIT PRICE (U.S.\$)
EPSIS 240 CS		10,904.40
	Electroactive Polymer Sensor Interrogation System (Complete Systems Package) EPSIS 240U II Sensor Interrogation Unit EPSISOFT™ Sensor Interrogation Software Pentium IV – 2.8 GHz PC Compatible Computer, Windows XP, SVGA Data Translation DT2825 A/D Card Cable and Connectors	
EPSIS 240 US		8,954.00
	Electroactive Polymer Sensor Interrogation System (Unit Based Package) EPSIS 240U II Sensor Interrogation Unit EPSISOFT™ Sensor Interrogation Software Data Translation DT2825 A/D Card Cable and Connectors	

[Back to Top](#)[Back to Top](#)

SSC 001 SENSOR SIMULATION CELL		331.50
	This cell simulates the responses of two pairs of EPMEs during interrogation using the EPSIS protocol. Comprises a RE 803 Ag ^o /AgCl, 3MCl ⁻ miniature reference electrode, two Ag ^o and two Pt ^o wire electrodes assembled in a covered 2.0 ml reaction cell.	

[Back to Top](#)**BIOANALYTICAL BIOTRANSDUCERS**

MODEL/PART NO.	DESCRIPTION	UNIT PRICE (U.S.\$)
AFFINITY BIOTRANSDUCERS WITH BIOTINYLATED SURFACE		
BB Au-1050.5-FD-Biotin (<i>for static cell</i>)		305.50
BB Au-1010.3-FD-Biotin (<i>for flow through cell</i>)		351.00
ACTIVATED BIOTRANSDUCERS WITH AMINE FUNCTIONALIZED SURFACE (-NH₂/-NH₃⁺)		
BB Au-1050.5-FD-NH ₂ (<i>for static cell</i>)		266.50
BB Au-1010.3-FD-NH ₂ (<i>for flow through cell</i>)		312.00
ACTIVATED BIOTRANSDUCERS WITH CARBOXYLIC ACID / CARBOXYLATE (-COOH/COO⁻)		
BB Au-1050.5-FD-COOH (<i>for static cell</i>)		266.50
BB Au-1010.3-FD-COOH (<i>for flow through cell</i>)		312.00
ACTIVATED BIOTRANSDUCERS WITH HYDROXYL SURFACE (-OH)		
BB Au-1050.5-FD-OH (<i>for static cell</i>)		266.50
BB Au-1010.3-FD-OH (<i>for flow through cell</i>)		312.00

[Back to Top](#)[Back to Top](#)[Back to Top](#)

[Back to Top](#)

ACTIVATED BIOTRANSDUCERS WITH SULFONIC ACID / SULFONATE SURFACE (-SO₃H/-SO₃⁻)

BB Au-1050.5-FD-SO ₃ ⁻ (for static cell)	266.50
BB Au-1010.3-FD-SO ₃ ⁻ (for flow through cell)	312.00

[Back to Top](#)

NON-ACTIVATED BIOTRANSDUCER - No surface activation

BB Au-1050.5-FD-X (for static cell)	227.50
BB Au-1010.3-FD-X (for flow through cell)	273.00

[Back to Top](#)



ELECTROACTIVE POLYMER MICROSENSOR ELECTRODES (EPMEs)
[Polyaniline (PAn), Polypyrrole (PPy), Polythiophene (Pty)]

Polyaniline (PAn) / dodecylbenzene sulfonic acid (DBSA), polystyrenesulfonic acid (PSSA)

Polypyrrole (PPy) / dodecylbenzene sulfonic acid (DBSA), polystyrenesulfonic acid (PSSA)

Poly(3-hexylthiophene) (PTh) / dodecylbenzene sulfonic acid (DBSA)

MODEL/PART NO.	DESCRIPTION	UNIT PRICE (U.S.\$)
EPME 1050 M - PAn, PPy or PTh	Monolithic	182.00
EPME 1050 CD - PAn, PPy or PTh	Combined Differential	201.50
EPME 1050 FD - PAn, PPy or PTh	Full Differential	227.50

[Back to Top](#)

INTERDIGITATED MICROSENSOR ELECTRODES (IMES)



[View Packaged IMES](#)

Gold

[3 mm digits](#)

[5 mm digits](#)



[View Un-packaged IMES](#)

Platinum

[3 mm digits](#)

[5 mm digits](#)



[Evaluation Sets](#)



[IME Accessories](#)

ITO

[3 mm digits](#)

[5 mm digits](#)



GOLD (Au) IME ELECTRODES - 5 mm Series

MODEL/PART NO.	DESCRIPTION	UNIT PRICE (U.S.\$)		
IME 2050.5 SERIES (20 um) - GOLD		1 - 4	5 - 9	10 +
IME 2050.5 M-Au-U (Monolithic)		75.00	71.25	67.50
IME 2050.5 M-Au-P		111.97	106.37	100.77
Back to Top		Back to IMES		
IME 1550.5 SERIES (15 um) - GOLD		1 - 4	5 - 9	10 +
IME 1550.5 M-Au-U (Monolithic)		93.30	88.63	83.97
IME 1550.5 M-Au-P		130.28	124.77	119.25
IME 1550.5 CD-Au-U (Combined Differential)		101.79	96.70	91.61
IME 1550.5 CD-Au-P		138.76	132.82	126.88
IME 1550.5 FD-Au-U (Full Differential)		111.03	105.48	99.93
IME 1550.5 FD-Au-P		148.00	141.60	135.20
Back to Top		Back to IMES		
IME 1050.5 SERIES (10 um) - GOLD		1 - 4	5 - 9	10 +
IME 1050.5 M-Au-U (Monolithic)		115.36	109.59	103.83

IME 1050.5 M-Au-P	152.33	144.71	137.10
IME 1050.5 CD-Au-U (Combined Differential)	123.85	117.66	111.47
IME 1050.5 CD-Au-P	160.82	152.78	144.74
IME 1050.5 FD-Au-U (Full Differential)	133.10	126.45	119.79
IME 1050.5 FD-Au-P	170.06	162.60	155.09

[Back to Top](#)

[Back to IMEs](#)

IME 0550.5 SERIES (5 um) - GOLD	1 - 4	5 - 9	10 +
IME 0550.5 M-Au-U (Monolithic)	215.45	204.68	193.91
IME 0550.5 M-Au-P	252.43	240.81	229.19
IME 0550.5 CD-Au-U (Combined Differential)	223.94	212.74	201.55
IME 0550.5 CD-Au-P	260.90	248.86	236.81
IME 0550.5 FD-Au-U (Full Differential)	233.18	221.52	209.86
IME 0550.5 FD-Au-P	270.15	257.64	245.14

[Back to Top](#)

[Back to IMEs](#)



PLATINUM (Pt) IME ELECTRODES - 5 mm Series

MODEL/PART NO.	DESCRIPTION	UNIT PRICE (U.S.\$)		
IME 2050.5 SERIES (20 um) - GOLD		1 - 4	5 - 9	10 +
IME 2050.5 M-Pt-U (Monolithic)		75.00	71.25	67.50
IME 2050.5 M-Pt-P		111.97	106.37	100.77

[Back to Top](#)

[Back to IMEs](#)

IME 1550 SERIES (15 um) - PLATINUM		1 - 4	5 - 9	10 +
IME 1550.5 M-Pt-U (Monolithic)		93.30	88.63	83.91
IME 1550.5 M-Pt-P		130.28	124.77	119.25
IME 1550.5 CD-Pt-U (Combined Differential)		101.79	96.70	91.61
IME 1550.5 CD-Pt-P		138.76	132.82	126.88
IME 1550.5 FD-Pt-U (Full Differential)		111.03	105.48	99.93
IME 1550.5 FD-Pt-P		148.00	141.60	135.20

[Back to Top](#)

[Back to IMEs](#)

IME 1050.5 SERIES (10 um) - PLATINUM		1 - 4	5 - 9	10 +
IME 1050.5 M-Pt-U (Monolithic)		115.36	109.59	103.83
IME 1050.5 M-Pt-P		152.33	144.71	137.10
IME 1050.5 CD-Pt-U (Combined Differential)		123.85	117.66	111.47
IME 1050.5 CD-Pt-P		160.82	152.78	144.74
IME 1050.5 FD-Pt-U (Full Differential)		133.10	126.45	119.79
IME 1050.5 FD-Pt-P		170.06	162.60	155.09

[Back to Top](#)

[Back to IMEs](#)

IME 0550.5 SERIES (5 um) - PLATINUM		1 - 4	5 - 9	10 +
IME 0550.5 M-Pt-U (Monolithic)		215.45	204.68	193.91
IME 0550.5 M-Pt-P		252.43	240.81	229.19
IME 0550.5 CD-Pt-U (Combined Differential)		223.94	212.74	201.55
IME 0550.5 CD-Pt-P		260.90	248.86	236.81
IME 0550.5 FD-Pt-U (Full Differential)		233.18	221.52	209.86
IME 0550.5 FD-Pt-P		270.15	257.64	245.14

[Back to Top](#)

[Back to IMEs](#)



INDIUM-TIN-OXIDE (ITO) IME ELECTRODES - 5 mm Series >

MODEL/PART NO.	DESCRIPTION	UNIT PRICE (U.S.\$)		
IME 2050.5 SERIES (20 um) - ITO		1 - 4	5 - 9	10 +
IME 2050.5 M-ITO-U (Monolithic)		75.00	71.25	67.50

IME 2050.5 M-ITO-P	111.97	106.37	100.77
Back to Top	Back to IMEs		
IME 1550.5 SERIES (15 um) - ITO	1 - 4	5 - 9	10 +
IME 1550.5 M-ITO-U (Monolithic)	93.30	88.63	83.97
IME 1550.5 M-ITO-P	130.28	124.77	119.25
IME 1550.5 CD-ITO-U (Combined Differential)	101.79	96.70	91.61
IME 1550.5 CD-ITO-P	138.76	132.82	126.88
IME 1550.5 FD-ITO-U (Full Differential)	111.03	105.48	99.93
IME 1550.5 FD-ITO-P	148.00	141.60	135.20

Back to Top	Back to IMEs		
IME 1050.5 SERIES (10 um) - ITO	1 - 4	5 - 9	10 +
IME 1050.5 M-ITO-U (Monolithic)	115.36	109.59	103.83
IME 1050.5 M-ITO-P	152.33	144.71	137.10
IME 1050.5 CD-ITO-U (Combined Differential)	123.85	117.66	111.47
IME 1050.5 CD-ITO-P	160.82	152.78	144.74
IME 1050.5 FD-ITO-U (Full Differential)	133.10	126.45	119.79
IME 1050.5 FD-ITO-P	170.06	162.60	155.09

Back to Top	Back to IMEs		
IME 0550 SERIES (5 um) - ITO	1 - 4	5 - 9	10 +
IME 0550.5 M-ITO-U (Monolithic)	215.45	204.68	193.91
IME 0550.5 M-ITO-P	252.43	240.81	229.19
IME 0550.5 CD-ITO-U (Combined Differential)	223.94	212.74	201.55
IME 0550.5 CD-ITO-P	260.90	248.86	236.81
IME 0550.5 FD-ITO-U (Full Differential)	233.18	221.52	209.86
IME 0550.5 FD-ITO-P	270.15	257.64	245.14

[Back to Top](#) [Back to IMEs](#)



GOLD (Au) ITO ELECTRODES - 3 mm Series

MODEL/PART NO.	DESCRIPTION	UNIT PRICE (U.S.\$)		
IME 2025.3 SERIES (20 um) - ITO		1 - 4	5 - 9	10 +
IME 2025.3 M-Au-U (Monolithic)		39.00	37.05	35.10
IME 2025.3 M-Au-P		66.80	64.46	62.12
IME 2025.3 CD-Au-U (Combined Differential)		46.80	44.46	42.12
IME 2025.3 CD-Au-P		74.60	71.87	69.14
IME 2025.3 FD-Au-U (Full Differential)		62.40	59.28	56.16
IME 2025.3 FD-Au-P		90.20	86.69	83.18

[Back to Top](#) [Back to IMEs](#)

MODEL/PART NO.	DESCRIPTION	UNIT PRICE (U.S.\$)		
IME 1525.3 SERIES (15 um) - GOLD		1 - 4	5 - 9	10 +
IME 1525.3 M-Au-U (Monolithic)		46.80	44.46	42.12
IME 1525.3 M-Au-P		74.60	70.87	67.14
IME 1525.3 CD-Au-U (Combined Differential)		54.60	51.87	59.14
IME 1525.3 CD-Au-P		82.40	78.28	74.16
IME 1525.3 FD-Au-U (Full Differential)		70.20	66.69	63.18
IME 1525.3 FD-Au-P		98.00	93.10	88.20

[Back to Top](#) [Back to IMEs](#)

IME 1025.3 SERIES (10 um) - GOLD		1 - 4	5 - 9	10 +
IME 1025.3 M-Au-U (Monolithic)		58.50	55.58	52.65
IME 1025.3 M-Au-P		86.30	82.00	77.67
IME 1025.3 CD-Au-U (Combined Differential)		66.30	63.00	59.67
IME 1025.3 CD-Au-P		94.10	90.40	86.69
IME 1025.3 FD-Au-U (Full Differential)		81.90	77.81	73.71
IME 1025.3 FD-Au-P		109.70	105.22	100.73

[Back to Top](#)

[Back to IMEs](#)

IME 0525.3 SERIES (5 um) - GOLD	1 - 4	5 - 9	10 +
IME 0525.3 M-Au-U (Monolithic)	93.60	88.92	84.24
IME 0525.3 M-Au-P	121.40	116.33	111.26
IME 0525.3 CD-Au-U (Combined Differential)	101.40	96.33	91.26
IME 0525.3 CD-Au-P	129.20	123.74	118.28
IME 0525.3 FD-Au-U (Full Differential)	117.00	111.15	105.30
IME 0525.3 FD-Au-P	144.80	138.56	132.32

[Back to Top](#)

[Back to IMEs](#)



PLATINUM (Pt) IME ELECTRODES - 3 mm Series

MODEL/PART NO.	DESCRIPTION	UNIT PRICE (U.S.\$)		
IME 2025.3 SERIES (20 um) - ITO		1 - 4	5 - 9	10 +
IME 2025.3 M-Pt-U (Monolithic)		39.00	37.05	35.10
IME 2025.3 M-Pt-P		66.80	64.16	62.12
IME 2025.3 CD-Pt-U (Combined Differential)		46.80	44.46	42.12
IME 2025.3 CD-Pt-P		74.60	71.87	69.14
IME 2025.3 FD-Pt-U (Full Differential)		62.40	59.28	56.16
IME 2025.3 FD-Pt-P		90.20	86.69	83.18

[Back to Top](#)

[Back to IMEs](#)

MODEL/PART NO.	DESCRIPTION	UNIT PRICE (U.S.\$)		
IME 1525.3 SERIES (15 um) - PLATINUM		1 - 4	5 - 9	10 +
IME 1525.3 M-Pt-U (Monolithic)		46.80	44.46	42.12
IME 1525.3 M-Pt-P		74.60	70.87	67.14
IME 1525.3 CD-Pt-U (Combined Differential)		54.60	51.87	49.14
IME 1525.3 CD-Pt-P		82.40	78.28	74.16
IME 1525.3 FD-Pt-U (Full Differential)		70.20	66.69	63.18
IME 1525.3 FD-Pt-P		98.00	93.10	88.20

[Back to Top](#)

[Back to IMEs](#)

IME 1025.3 SERIES (10 um) - PLATINUM		1 - 4	5 - 9	10 +
IME 1025.3 M-Pt-U (Monolithic)		58.50	55.58	52.65
IME 1025.3 M-Pt-P		86.30	82.00	77.67
IME 1025.3 CD-Pt-U (Combined Differential)		66.30	63.00	59.67
IME 1025.3 CD-Pt-P		94.10	90.40	86.69
IME 1025.3 FD-Pt-U (Full Differential)		81.90	77.81	73.71
IME 1025.3 FD-Pt-P		109.70	105.22	100.73

[Back to Top](#)

[Back to IMEs](#)

IME 0525.3 SERIES (5 um) - PLATINUM		1 - 4	5 - 9	10 +
IME 0525.3 M-Pt-U (Monolithic)		93.60	88.92	84.24
IME 0525.3 M-Pt-P		121.40	116.33	111.26
IME 0525.3 CD-Pt-U (Combined Differential)		101.40	96.33	91.26
IME 0525.3 CD-Pt-P		129.20	123.74	118.28
IME 0525.3 FD-Pt-U (Full Differential)		117.00	111.15	105.30
IME 0525.3 FD-Pt-P		144.80	138.56	132.32

[Back to Top](#)

[Back to IMEs](#)



INDIUM-TIN-OXIDE (ITO) IME ELECTRODES - 3 mm Series

MODEL/PART NO.	DESCRIPTION	UNIT PRICE (U.S.\$)		
IME 2025.3 SERIES (20 um) - ITO		1 - 4	5 - 9	10 +

IME 2025.3 M-ITO-U (Monolithic)	39.00	37.05	35.10
IME 2025.3 M-ITO-P	66.80	64.46	62.12
IME 2025.3 CD-ITO-U (Combined Differential)	46.80	44.46	42.12
IME 2025.3 CD-ITO-P	74.60	71.87	69.14
IME 2025.3 FD-ITO-U (Full Differential)	62.40	59.28	56.16
IME 2025.3 FD-ITO-P	90.20	86.69	83.18

[Back to Top](#)

[Back to IMEs](#)

MODEL/PART NO.	DESCRIPTION			UNIT PRICE (U.S.\$)		
IME 1525.3 SERIES (15 um) - ITO						
	1 - 4	5 - 9	10 +			
IME 1525.3 M-ITO-U (Monolithic)	46.80	44.46	42.12			
IME 1525.3 M-ITO-P	74.60	70.87	67.14			
IME 1525.3 CD-ITO-U (Combined Differential)	54.20	51.87	49.14			
IME 1525.3 CD-ITO-P	82.40	78.28	74.16			
IME 1525.3 FD-ITO-U (Full Differential)	70.20	66.69	63.18			
IME 1525.3 FD-ITO-P	98.00	93.10	88.20			

[Back to Top](#)

[Back to IMEs](#)

IME 1025.3 SERIES (10 um) - ITO						
	1 - 4	5 - 9	10 +			
IME 1025.3 M-ITO-U (Monolithic)	58.50	55.58	52.65			
IME 1025.3 M-ITO-P	86.30	82.00	77.67			
IME 1025.3 CD-ITO-U (Combined Differential)	66.30	63.00	59.67			
IME 1025.3 CD-ITO-P	94.10	90.40	86.69			
IME 1025.3 FD-ITO-U (Full Differential)	81.90	77.81	73.71			
IME 1025.3 FD-ITO-P	109.70	105.22	100.73			

[Back to Top](#)

[Back to IMEs](#)

IME 0525.3 SERIES (5 um) - ITO						
	1 - 4	5 - 9	10 +			
IME 0525.3 M-ITO-U (Monolithic)	93.60	88.92	84.24			
IME 0525.3 M-ITO-P	121.40	116.33	111.26			
IME 0525.3 CD-ITO-U (Combined Differential)	101.40	96.33	98.28			
IME 0525.3 CD-ITO-P	129.20	123.74	118.28			
IME 0525.3 FD-ITO-U (Full Differential)	117.00	111.15	105.30			
IME 0525.3 FD-ITO-P	144.80	138.36	132.32			

[Back to Top](#)

[Back to IMEs](#)



IME EVALUATION SETS

IME DESIGN EVALUATION SET (15 um) GOLD, PLATINUM OR ITO

Three discrete IME 1550 devices, one each of the following different designs but all of one conductor:

IME 1550 Au - M, CD and FD (Gold)

IME 1550 Pt - M, CD and FD (Platinum)

IME 1550 ITO - M, CD and FD (Indium Tin Oxide)

Unpackaged

UNIT PRICE (U.S.\$)

275.60

275.60

275.60

Packaged

UNIT PRICE (U.S.\$)

341.10

341.10

341.10

[Back to Top](#)

[Back to IMEs](#)

IME DESIGN EVALUATION SET (10 um) GOLD, PLATINUM OR ITO

Three discrete IME 1050 devices, one each of the following different designs but all of one conductor:

IME 1050 Au - M, CD and FD (Gold)

IME 1050 Pt - M, CD and FD (Platinum)

IME 1050 ITO - M, CD and FD (Indium Tin Oxide)

Unpackaged

UNIT PRICE (U.S.\$)

335.40

335.40

335.40

Packaged

UNIT PRICE (U.S.\$)

401.00

401.00

401.00

[Back to Top](#)

[Back to IMEs](#)

IME DESIGN EVALUATION SET (5 um) GOLD, PLATINUM OR ITO

Three discrete IME 0550 devices, one each of the following different designs but all of one conductor:

IME 0550 Au - M, CD and FD (Gold)

IME 0550 Pt - M, CD and FD (Platinum)

IME 0550 ITO - M, CD and FD (Indium Tin Oxide)

Unpackaged

UNIT PRICE (U.S.\$)

605.80

605.80

605.80

Packaged

UNIT PRICE (U.S.\$)

671.30

671.30

671.30

[Back to Top](#)

[Back to IMEs](#)

IME CONDUCTOR EVALUATION SET (15 um) M, CD or FD

Unpackaged

Packaged

Three discrete IME 1550 devices, one each of the following different conductors but all of one design:

- IME 1550 M - Au, PT and ITO (Monolithic)
- IME 1550 CD - Au, PT and ITO (Combined Differential)
- IME 1550 FD - Au, PT and ITO (Full Differential)

UNIT PRICE (U.S.\$)	UNIT PRICE (U.S.\$)
251.91	317.75
274.83	340.65
299.78	365.59

[Back to Top](#)

[Back to IMEs](#)

IME CONDUCTOR EVALUATION SET (10 um) GOLD, PLATINUM OR ITO

Three discrete IME 1050 devices, one each of the following different conductors but all of one design:

- IME 1050 M - Au, PT and ITO (Monolithic)
- IME 1050 CD - Au, PT and ITO (Combined Differential)
- IME 1050 FD - Au, PT and ITO (Full Differential)

Unpackaged UNIT PRICE (U.S.\$)	Packaged UNIT PRICE (U.S.\$)
311.48	377.28
334.40	400.20
359.36	425.16

[Back to Top](#)

[Back to IMEs](#)

IME CONDUCTOR EVALUATION SET (5 um) GOLD, PLATINUM OR ITO

Three discrete IME 0550 devices, one each of the following different conductors but all of one design:

- IME 0550 M - Au, PT and ITO (Monolithic)
- IME 0550 CD - Au, PT and ITO (Combined Differential)
- IME 0550 FD - Au, PT and ITO (Full Differential)

Unpackaged UNIT PRICE (U.S.\$)	Packaged UNIT PRICE (U.S.\$)
581.71	647.55
604.63	670.44
629.59	675.39

[Back to Top](#)

[Back to IMEs](#)

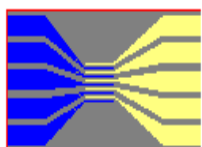


IME ACCESSORIES: Connectors and adapters for use with microfabricated Interdigitated Microsensor Electrode (IME) arrays.

IME TEST CLIP and ADAPTERS --->	Perfusion Chamber	CARRIER	Test Clip	ADAPTER	ADAPTER	ADAPTER
Dimensions	D = 9 mm V @ 35ml	11.4 cm	N/A	12 cm	30 cm	1 meter
Connector Type	Micropipette	Gold Plated Pins to PCB	Gold Plated Pins	Gold Plated Pins	Gold Plated Pins	Banana Plugs
Number of Conductors	2 each chamber: IN & OUT	4 on PCB	4 on one side	4 + shield	4 + shield	4 + shield
Lead	N.A.		N/A	Rigid Rod	Flexible	Flexible
Part No.	PC8R-0.5 Perfusion Chamber	4-Pin CHIP CARRIER WAND	STC 4	STCA-1-R	STCA-2-P	STCA-3-B
Unit Price (\$ US)	\$10.00	\$ 22.00	\$25.00	\$62.40	\$62.40	\$62.40

[Back to Top](#)

[Back to IMEs](#)



INDEPENDENTLY ADDRESSABLE INTERDIGITATED MICROSENSOR ELECTRODES (IAIMES)

IAIME Series	Unpackaged UNIT PRICE (U.S.\$)
A total of ten (10) independently addressable microbands with five bands alternating and interdigitated from opposing sides. Each microband is 3 mm long and 5 microns wide. Spacing between each band is 5 microns. Chip is 1.5 cm x 3.0 cm x 0.05 cm. This chip uses IAIME CARRIER and Perfusion Chamber.	
IAIME 0505-Au (Gold)	175.00

IAIME 0505-Pt (Platinum)	175.00
IAIME 0505-ITO (Indium Tin Oxide)	175.00

[Back to Top](#)

[Back to IMEs](#)

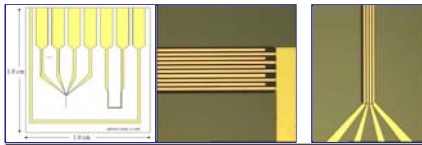


INDEPENDENTLY ADDRESSABLE MICROBAND ELECTRODES (IAMEs)

IAME Series	Unpackaged
A total of four (4) independently addressable microband electrodes. Each microband is 3 mm long. Microbands and spaces may be 5, 10, 15, or 20 microns wide. Chips are 1.0 cm x 2.0 cm x 0.05 cm:	UNIT PRICE (U.S.\$)
IAME 0504-Au, Pt or ITO (Gold, Platinum or ITO)	75.00
IAME 1004-Au, Pt or ITO (Gold, Platinum or ITO)	70.00
IAME 1504-Au, Pt or ITO (Gold, Platinum or ITO)	60.00
IAME 2004-Au, Pt or ITO (Gold, Platinum or ITO)	50.00

[Back to Top](#)

[Back to IMEs](#)



INDEPENDENTLY ADDRESSABLE MICROBAND ELECTRODES (IAMEs)-co-INTERDIGITATED MICROSENSOR ELECTRODES - 1 mm Spaces.

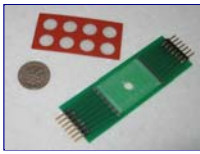
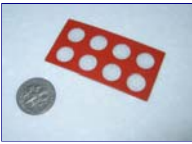

IAME-co-IME Series	Unpackaged
A total of four (4) independently addressable microband electrodes and a pair of 1.0 mm long, 2 um wide, 1 um spaced interdigitated microsensor electrodes. Each microband is 1.0 mm long by 2 um wide and spaced 1 um apart. Chips are 1.0 cm x 1.0 cm x 0.05 cm:	UNIT PRICE (U.S.\$)
IAME-co-IME 2-1 Au (Gold)	125.00
IAME-co-IME 2-1 Pt (Platinum)	125.00

[Back to Top](#)

[Back to IMEs](#)

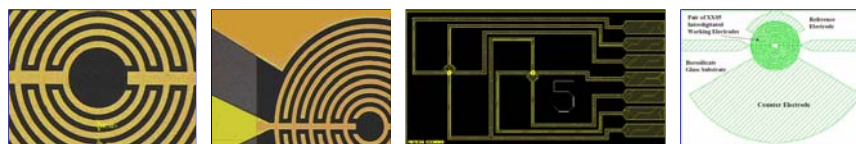


IAIME and IAME ACCESSORIES: Connectors and adapters for use with microfabricated Independently Addressable Microband Electrodes (IAMEs).

IAIME and IAME CARRIER AND ADAPTER --->	ADAPTER Carrier 	Perfusion Chamber 	ADAPTER 
Carrier / Adapter Dimensions:	1.0" x 3.0" (2.54 cm x 7.62 cm)	D = 9mm; V @ 35 ml	(0.4" x 1.5") (1.0 cm x 11.0 cm)
Lead Length	2.3 cm	N.A.	11.0 cm
Connector Type	Gold Plated Pins to PCB	Micropipette	Gold Plated Pins to PCB
Number of Conductors	14 total, 7 on each end of PCB	2 each chamber: IN & OUT	4 each on PCB
Lead	Gold	N.A.	Gold
Part No.	IAIME CARRIER and Perfusion Chamber	PC8R-0.5 Perfusion Chamber	4-Pin CHIP CARRIER WAND
Unit Price (\$ US)	\$25.00	\$10.00	\$ 22.00

[Back to Top](#)

[Back to IMEs](#)



ELECTROCHEMICAL CELL-ON-A-CHIP (ECC IMEs):
For bioelectrochemistry and biosensors.
Two complete E'Cells. WE = IME XX05

UNIT PRICE (U.S.\$)

ECC IME GOLD, PLATINUM (borosilicate glass, 10 nm Ti/W; 100 nm Au or Pt; 500 nm Si ₃ N ₄)	1 - 4	5 - 9	10 +
ECC IME 0505 Au or Pt (1.0 cm x 2.0 cm x 0.05 cm) 05 microns lines and spaces	233.18	221.52	209.86
ECC IME 1005 Au or Pt (1.0 cm x 2.0 cm x 0.05 cm) 10 microns lines and spaces	133.10	126.45	119.79
ECC IME 1505 Au or Pt (1.0 cm x 2.0 cm x 0.05 cm) 15 microns lines and spaces	111.03	105.48	99.93
ECC IME 2005 Au or Pt (1.0 cm x 2.0 cm x 0.05 cm) 20 microns lines and spaces	95.00	90.25	85.50

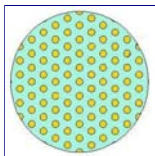


ELECTROCHEMICAL CELL-ON-A-CHIP (ECC MDEAs):
For bioelectrochemistry and biosensors: Two complete E'Cells. WE = 37 of 50 mm diameter microdiscs

ECC MDEA GOLD, PLATINUM (borosilicate glass, 10 nm Ti/W; 100 nm Au or Pt; 500 nm Si ₃ N ₄)	1 - 4	5 - 9	10 +
ECC MDEA 5037 Au or Pt (0.2 cm x 0.4 cm x 0.05 cm) 37 of 50 microns diameter microdiscs - Electrode assembly with connector	150.00	142.50	135.00
ECC MDEA 5037 Au or Pt (0.2 cm x 0.4 cm x 0.05 cm) 37 of 50 microns diameter microdiscs - chip only	25.00	23.75	22.50

[Back to Top](#)

[Back to IMEs](#)



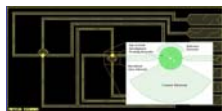
MICRODISC ELECTRODE ARRAYS (MDEAs):
For bioelectrochemistry

UNIT PRICE (U.S.\$)




MDEA GOLD, PLATINUM (borosilicate glass, 10 nm Ti/W; 100 nm Au or Pt; 500 nm Si ₃ N ₄)	1 - 4	5 - 9	10 +
MDEA 360 Au or Pt (1.0 cm x 2.0 cm)	40.00	38.00	36.00

<i>MDEA 250 Au or Pt (1.0 cm x 2.0 cm)</i>	50.00	47.50	45.00
MDEA 100 Au or Pt (1.0 cm x 2.0 cm)	55.00	52.25	49.5
MDEA 050 Au or Pt (1.0 cm x 2.0 cm)	60.00	57.00	54.00

[Back to Top](#)[Back to IMEs](#)



ECC and MDEA ACCESSORIES: Connectors and for use with microfabricated Electrochemical Cell-on-a-Chip and Microdisc Electrode Arrays (MDEAs).

ECC IME ADAPTER --->	Perfusion Chamber 	STC 7 Test Clip 	CARRIER 
Carrier / Adapter Dimensions:	D = 9mm; V @ 35 ml	1.0" x 3.0" (2.54 cm x 7.62 cm)	(0.4" x 1.5") (1.0 cm x 4.0 cm)
Lead Length	N.A.	1.0 cm	4.0 cm
Connector Type	Micropipette	Gold Plated Pins to Spring Loaded Clip	Gold Plated Pins to PCB
Number of Conductors	2 each chamber: IN & OUT	7 on one side	7 each on PCB
Lead	N.A.	Gold	Gold
Part No.	PC8R-0.5 Perfusion Chamber	STC 7 Test Clip	7-Pin CHIP CARRIER WAND
Unit Price (\$ US)	\$10.00	\$25.00	\$ 22.00

[Back to Top](#)

[Back to IMEs](#)

[Back to Top](#)



PLANAR METAL ELECTRODES (PMEs) MICROARRAY BIOCHIP SUBSTRATES (PMEMABioChip):

For DNA, Protein, Sub-cellular organelle, cellular and tissue biochips

	UNIT PRICE (U.S.\$)		
PMEMABioChip GOLD (borosilicate glass, 100 Å Ti/W, 1,000 Å Au)	1 - 4 pks	5 - 9 pks	10 + pks
PMEMA1x3AU BioChip (1.0" x 3.0") <i>1 package of five (5) pieces</i>	\$200.00	\$180.00	\$150.00
PMEMABioChip PLATINUM (borosilicate glass, 100 Å Ti/W, 1,000 Å Pt)	1 - 4 pks	5 - 9 pks	10 + pks
PMEMA1x3PT BioChip (1.0" x 3.0") <i>1 package of five (5) pieces</i>	\$200.00	\$180.00	\$150.00

[Back to Top](#)



PLANAR METAL ELECTRODES (PMEs):

For alkanethiol, electroactive polymers and bioelectrochemistry

	UNIT PRICE (U.S.\$)		
PME GOLD (borosilicate glass, 100 Å Ti/W, 1,000 Å Au)	1 - 4 pks	5 - 9 pks	10 + pks
PME Au 118 (1.0 cm x 2.0 cm) <i>1 package of six (6) pieces</i>	\$156.00	\$148.20	\$140.40
PME Au 118-P (1.0 cm x 1.0 cm) packaged <i>1 package of one (1) piece only</i>	\$55.10	\$53.35	\$51.59
PME Au 218 (2.0 cm x 2.0 cm) <i>1 package of four (4) pieces</i>	\$156.00	\$148.20	\$140.40

[Back to Top](#)

PME PLATINUM (borosilicate glass, 200 Å Ti/W, 1,000 Å Pt)	1 - 4 pks	5 - 9 pks	10 + pks
PME Pt 118 (1.0 cm x 2.0 cm) <i>1 package of six (6) pieces</i>	\$156.00	\$148.20	\$140.40
PME Pt 118-P (1.0 cm x 1.0 cm) packaged <i>1 package of one (1) piece only</i>	\$55.10	\$53.35	\$51.59

PME Pt 218 (2.0 cm x 2.0 cm) 1 package of four (4) pieces	\$156.00	\$148.20	\$140.40
--	----------	----------	----------

[Back to Top](#)



PLANAR ITO ELECTRODES (PITOE):

For organosilane chemistry, bio-immobilizations and optical microscopy

PITOE (borosilicate glass, one side coated, 10 ohms/sq)	1 - 4 pks	5 - 9 pks	10 + pks
PITOE 118 (1.0 cm x 2.0 cm x 0.05 cm) 1 package of six (6) pieces	\$71.50	\$67.93	\$64.35
PITOE 118-P (1.0 cm x 1.0 cm x 0.05 cm) 1 package of one (1) piece only	\$55.10	\$53.35	\$51.59
PITOE 218 (2.0 cm x 2.0 cm x 0.05 cm) 1 package of four (4) pieces	\$71.50	\$67.93	\$64.35

[Back to Top](#)

For optical spectroscopy and spectroelectrochemistry - Fits standard 1.0 cm cuvette

PITOE (borosilicate glass, one side coated, 10 ohms/sq)	1 - 4 pks	5 - 9 pks	10 + pks
PITOE 150 (0.9 cm x 5.0 cm x 0.05 cm) 1 package of six (6) pieces	\$93.60	\$88.92	\$84.24
PITOE 150-P (0.9 cm x 5.0 cm x 0.05 cm) 1 package of one (1) piece only	\$59.00	\$57.05	\$55.10
PITOE 250 (2.0 cm x 5.0 cm x 0.05 cm) 1 package of four (4) pieces	\$93.60	\$88.92	\$84.24

[Back to Top](#)



MINIATURE ELECTRODES

For electroactive polymers, biosensors, bioelectrochemistry

Miniature Electrodes	UNIT PRICE (U.S.\$)
RE 803-X MINIATURE REFERENCE ELECTRODE; Ag ^o /AgCl, 3M KCl ⁻	123.50
RE 803-RX Refurbishing Kit for Ag ^o /AgCl electrode: 3 barrels and 1 filling solution	71.50
CPE 905-X MINIATURE COMBINATION pH ELECTRODE	335.40
OS-418 MINIATURE OXYGEN SENSOR	465.00

[Back to Top](#)



GAS FLOW CELL SENSOR PRODUCTS

For development of electronic noses, the study of polymer-vapor interactions by impedance and dielectric spectroscopies and for VOC sensors

Gas and Vapor Phase Flow Cell with one (1) IME Sensor	UNIT PRICE (U.S.\$)
CEC 1010.3-FD Controlled Environment Cell (10 lines, 10 um)	277.40
IME 1010.3-FD-Au or Pt Flow Cell Sensor (refill sensor chip for Controlled Environment Cell, CEC) (10 lines, 10 um)	150.00

[Back to Top](#)



LIQUID FLOW CELL DETECTOR PRODUCTS

Used as an electrochemical or impedimetric detector in low pressure liquid chromatography, flow injection analysis, biosensor development and polymer-liquid interactions

	UNIT PRICE (U.S.\$)
Liquid Phase Flow Cell Detector with two (2) IME Sensors. (Uses IME LC 1010.3-FD)	
FCD 1010.3-FD Flow Cell Detector for FIA and LPLC (10 lines, 10 μ m)	\$1,856.50
IME 1010.3-FD-Au or Pt Flow Cell Sensor (refill sensor for Flow Cell Detector, FCD) (10 lines, 10 μ m)	150.00

[Back to Top](#)



OXYGEN SENSOR PRODUCTS

	UNIT PRICE (U.S.\$)
OSI-2 Dual Channel Oxygen Sensor Instrument (Sets voltage, measures oxygen sensor current)	1500.00
OS-418 Miniature Oxygen Sensor with SC9 Sensor Cable	465.00
SC9 Sensor Cable Sub-Minax to Sub-Minax (connects OSI-2 to OS-418)	50.00
IC9-s Instrument Output Cable BNC to spade	50.00
IC9-b Instrument Output Cable BNC to banana jack	50.00

[Back to Top](#)



APPLICATION NOTES - DOWNLOAD FILES

	UNIT PRICE (U.S.\$)
IME1 - <i>Applications of Interdigitated Microsensor Electrodes</i>	32.50
BA2 - <i>Biosensor-based Assays Using EPSIS</i>	32.50
BA1 - <i>Introduction to Biosensor-based Assays</i>	32.50
BA3 - <i>An Impedimetric Urea Biosensor Using Microfabricated IMEs</i>	32.50

[Back to Top](#)



MANUALS

	UNIT PRICE (U.S.\$)
EPSIS 240U II Manual	55.00

[Back to Top](#)

ALL PRICES ARE FOB RICHMOND, VA. TERMS ARE NET 30 AND SUBJECT TO CHANGE WITHOUT NOTICE.

You may send questions/comments to sales@abtechsci.com

Contact: Ann M. Wilson, Manager,
Applications Development, ABTECH Scientific, Inc.
800 East Leigh Street, Suite 52, Richmond, Virginia 23219
Telephone Number: +1-804-783-7829 Fax Number: +1-804-783-7830

e-mail: sales@abtechsci.com